



Charlene Wise Birchfield Weaver

March 10, 1945 - August 15, 2017

Charlene Wise Birchfield Weaver, 72, wife of Jerry Curtis Weaver, passed away Tuesday, August 15, 2017 surrounded by her family. She was born March 10, 1945 in Richmond, Kentucky to the late Chester and Susan Rogers Wise. Survivors include, husband, Jerry Curtis Weaver; son, Henry Birchfield Jr.; daughter, Lisa Crawford; step-daughter, Christine Lynn Ellison; brother, Linville "Bud" Wise; twin sister, Darlene Sparks; granddaughter, Heather Ellison step great-granddaughter, Faith Ann Ellison. She was preceded in death by her parents, Chester and Susan Wise, husband, Henry Birchfield Sr., sister, Estill Helton, and brothers, Worthly Clay Wise and Millard Lee Wise. Funeral services Thursday, August 17, 1:00PM Davis & Davis Funeral Home, Stanton. Visitation Thursday after 12:00PM at the funeral home. Burial in Stout Cemetery, Carter County, Tennessee with family and friends serving as pallbearers.

Tribute Wall



“ *Eva Rogers Shuler lit a candle in memory of Charlene Wise Birchfield Weaver* ”



Eva Rogers Shuler - August 18, 2017 at 01:05 PM



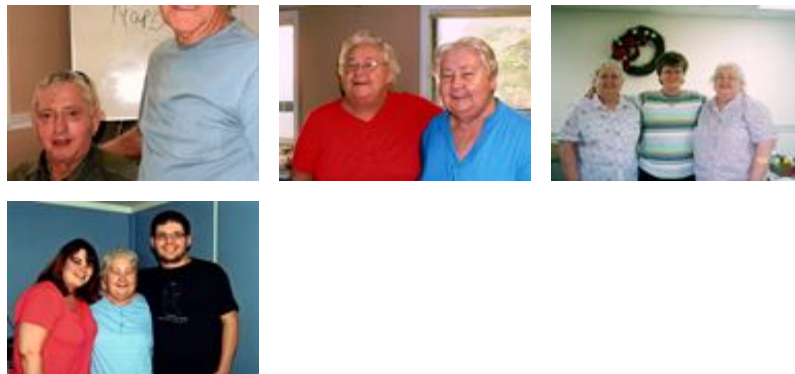
“ *Henry Birchfield lit a candle in memory of Charlene Wise Birchfield Weaver* ”



Henry Birchfield - August 17, 2017 at 09:01 AM



“ *4 files added to the album LifeTributes* ”



Wells Funeral Home - August 17, 2017 at 07:58 AM

LC

“ *Lisa Crawford sent a virtual gift in memory of Charlene Wise Birchfield Weaver*



Lisa Crawford - August 16, 2017 at 05:40 PM

LI

“ *Lisa lit a candle in memory of Charlene Wise Birchfield Weaver*



Lisa - August 16, 2017 at 04:30 PM



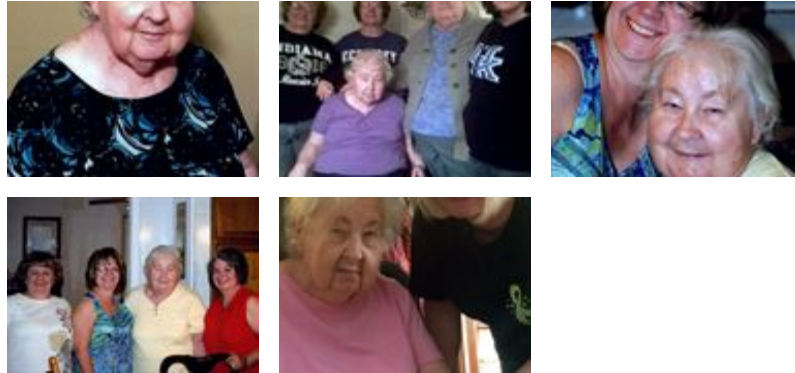
“ *Simply Elegant Spathiphyllum was purchased for the family of Charlene Wise Birchfield Weaver.*



August 16, 2017 at 11:24 AM



“ 98 files added to the album LifeTributes



Wells Funeral Home - August 16, 2017 at 10:33 AM



“ Patty(Briscoe)Coy lit a candle in memory of Charlene Wise Birchfield Weaver



Patty(Briscoe)Coy - August 16, 2017 at 10:30 AM



“ Russell Toothman sent a virtual gift in memory of Charlene Wise Birchfield Weaver



Russell Toothman - August 15, 2017 at 09:01 PM

LT

“ *Lela Toothman lit a candle in memory of Charlene Wise Birchfield Weaver*



lela toothman - August 15, 2017 at 07:23 PM



Christina Holmes

“ *3 files added to the tribute wall*



Christina Holmes - August 15, 2017 at 06:16 PM

BS

“ *Brenda Sparks lit a candle in memory of Charlene Wise Birchfield Weaver*



Brenda Sparks - August 15, 2017 at 05:13 PM

LM

“ *Thoughts and prayers are with you.*



Larry J. Meadows - August 15, 2017 at 04:34 PM